

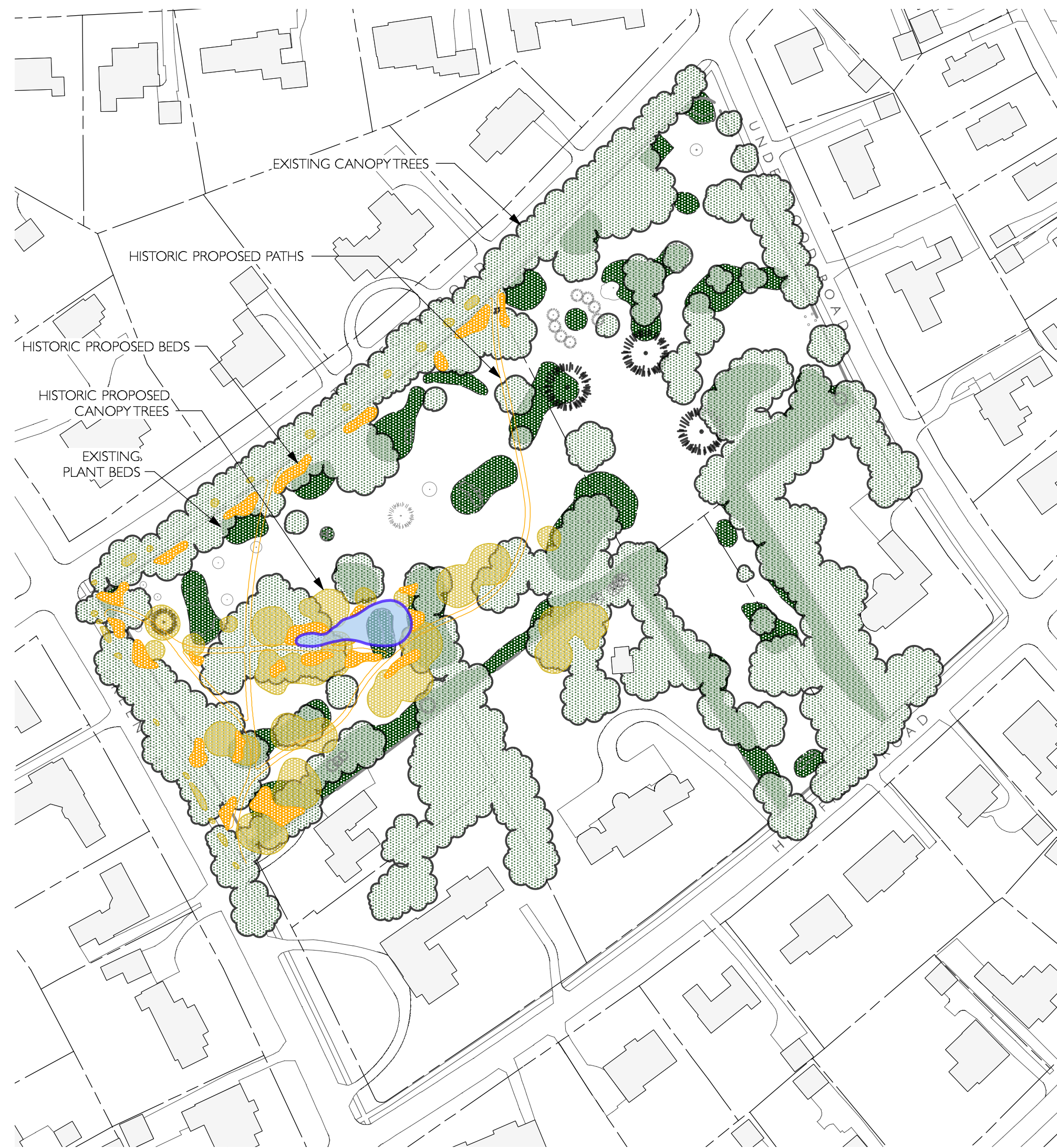
LONG-RANGE MASTER PLAN
FOR
SHERWOOD GARDENS
BALTIMORE, MARYLAND
NOVEMBER 5, 2013

SHERWOOD GARDENS

November 5, 2013



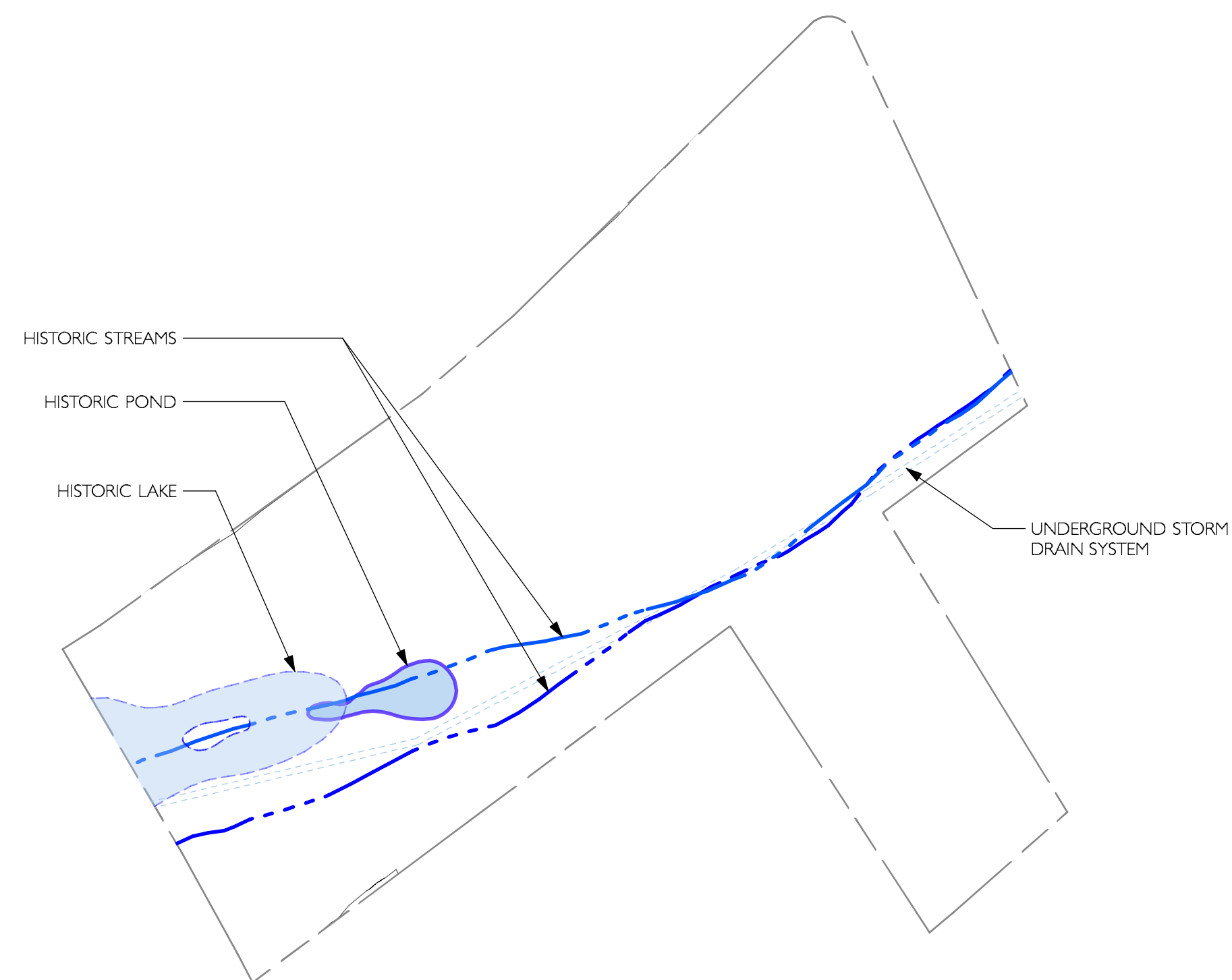
HISTORIC ECOLOGY & HYDROLOGY IN RELATION TO EXISTING BEDS & TREES



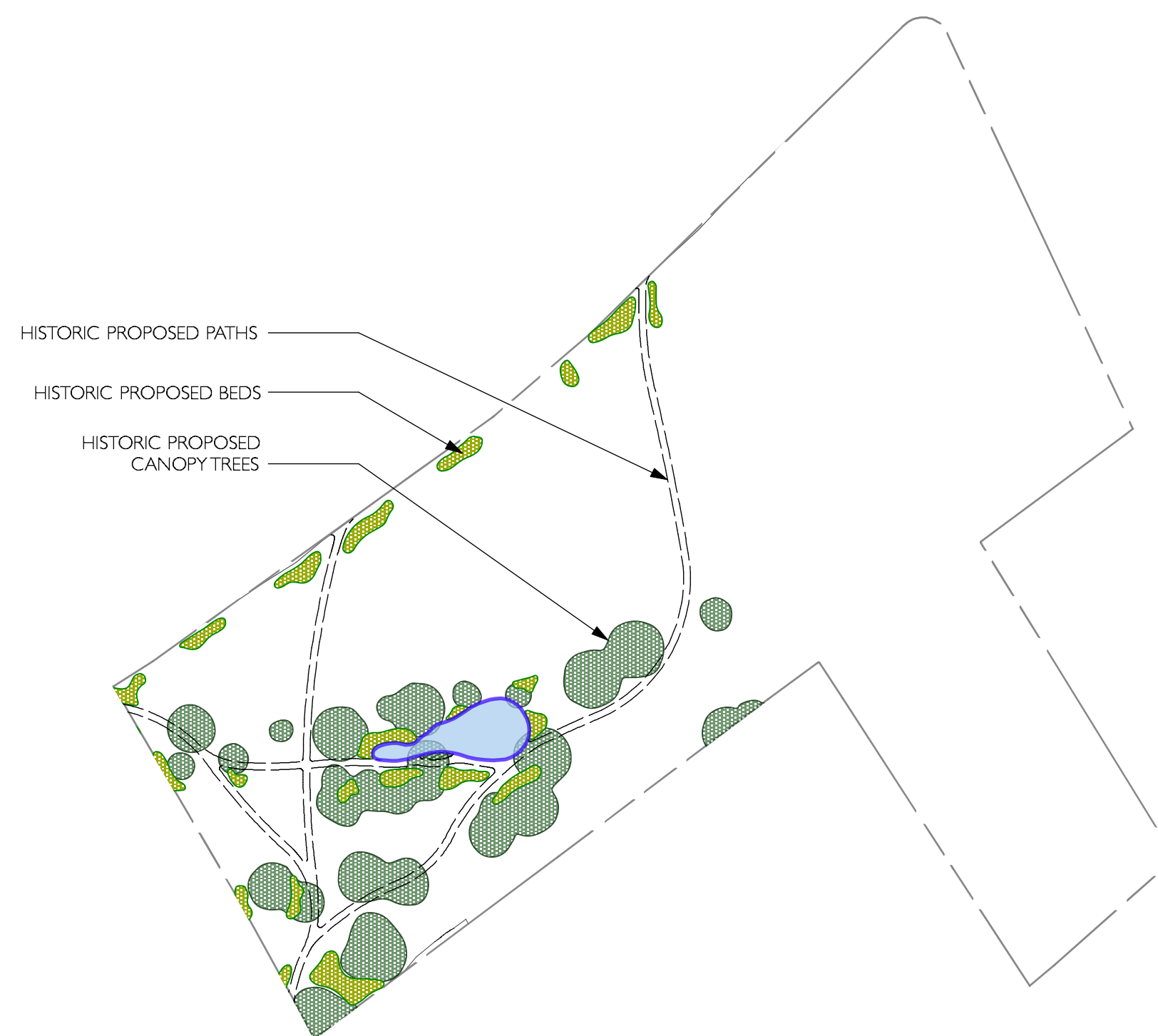
OLMSTED BROTHERS PLAN IN RELATION TO EXISTING BEDS & TREES



SHERWOOD 1942 BEDS IN RELATION TO EXISTING BEDS & TREES



HISTORIC ECOLOGY & HYDROLOGY



OLMSTED BROTHERS PLAN



SHERWOOD 1942 BEDS

SHERWOOD GARDENS

November 5, 2013



© National Geographic Society **With Studied Carelessness, Blooms in Sherwood Gardens Are Massed to Show Their Beauty** Kodachrome by Charles Martin
 This spring thousands of first-year tulip bulbs from expanding nurseries in Michigan and on the Pacific coast, supplemented by cottage tulips from England, will replace the Darwins and Breeders from the Netherlands, pictured here. In other beds, last year's bulbs have been replanted for the first time.



© National Geographic Society **War in Europe May Mean No More Photographs Like This in a Generation** Kodachrome by B. Anthony Stewart
 For ten years every tulip in Sherwood Gardens bloomed from prize first-year Netherlands bulbs. These pictures were made in May, 1940. The Netherlands bulb industry now faces extinction; imports are cut off, and the tulip fields have been plowed up to grow vegetables.

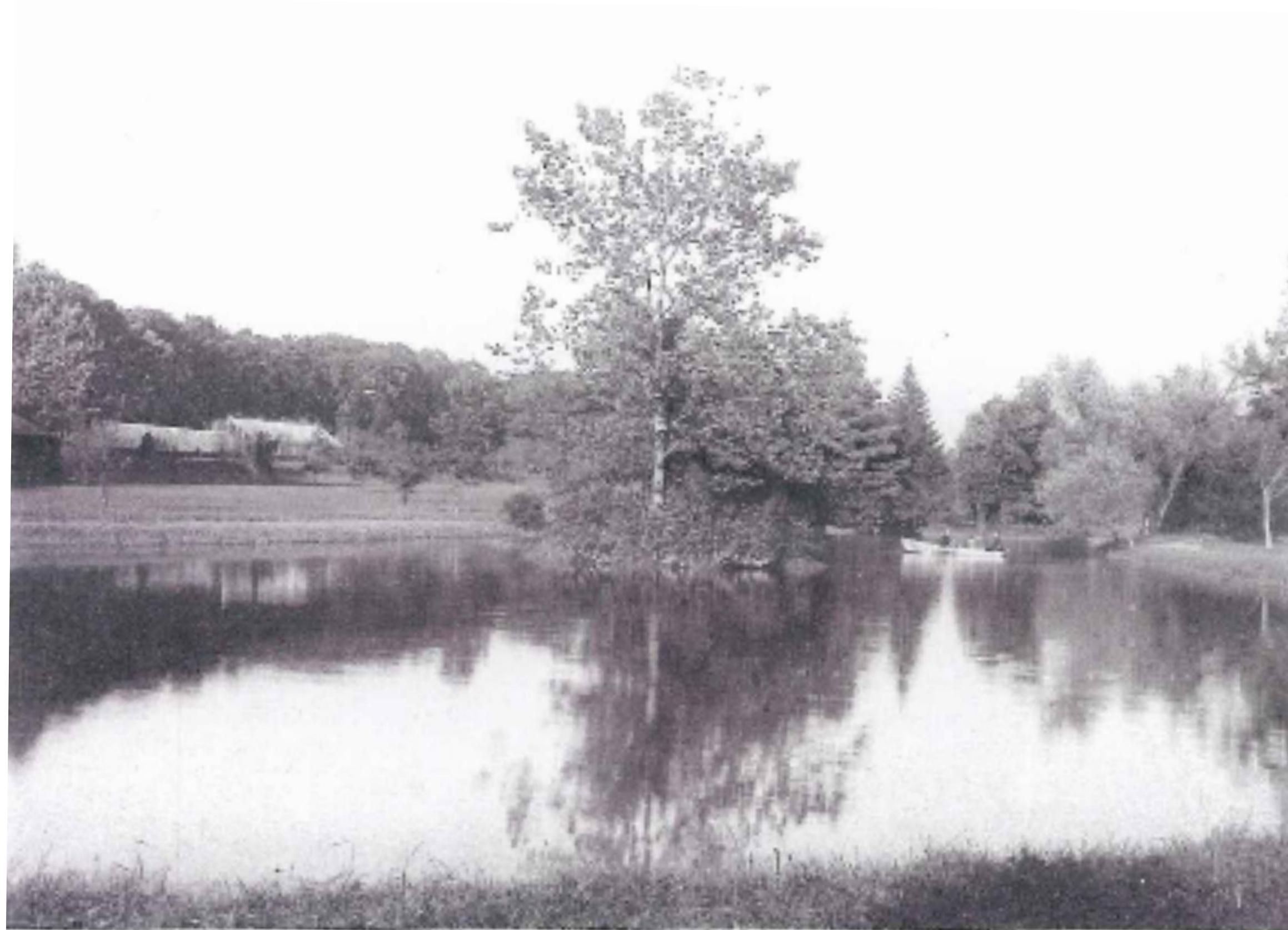


© National Geographic Society **Massed Blooms from Switzerland, the Orient, and the Netherlands** Kodachrome by B. Anthony Stewart
 From rocky Alpine crags came the sprightly monkey-faced pansies. Homeland of many of the flaming azaleas is Japan. Other varieties, including the fragrant Ghent azalea, were imported from Europe. Tulip bulbs are from the land of dikes and windmills. Wistaria "tree" in background (page 445).

IMAGES FROM APRIL 1941 NATIONAL GEOGRAPHIC MAGAZINE. NOTE THE SINUOUS DRIFTS OF AZALEAS & THE SPRING FLOWERING DOGWOODS & CRABAPPLES. THE EXISTING GARDENS HAVE A HIGH PREVALENCE OF SUMMER FLOWERING Crapemyrtles, WHICH ARE NOT EVIDENT IN OLD IMAGES OF THE GARDENS, & HAVE DECREASING NUMBERS OF DOGWOODS AND CRABAPPLES.

SHERWOOD GARDENS

November 5, 2013



Artificial lake created by William McDonald in the area now occupied by Stanford Green and Sherwood Gardens. To the left are the green houses and graperies built by McDonald.

VIEW FROM HISTORIC LAKE



PROSPECT PARK - OLMSTED & VAUX



[PP79.1472.1] Sherwood Gardens. 1967. Photograph by Robert F. Knaeche. Knaeche Photograph Collection.

Copy of original owned by the Maryland Historical Society. No reproduction or use without permission.

MOST LIKELY NORTH MANSION LAWN. 1967



[PP79.437.2] Sherwood Gardens. May 1, 1963. Photograph by Robert F. Knaeche. Knaeche Photograph Collection.

Copy of original owned by the Maryland Historical Society. No reproduction or use without permission.

LOOKING FROM SHERWOOD MANSION, MAY 1, 1963



THE LONG MEADOW IN PROSPECT PARK

BEECHBROOK
landscape architecture

t 410.685.5263
f 410.685.5264
beechbrookla.com

master plan: images of historic garden conditions & Olmsted precedent

SHERWOOD GARDENS

November 5, 2013



THIS IMAGE FROM 1950 DEPICTS THE WIDE OPEN LAWN SPACE FRAMED BY DENSELY PLANTED BEDS WITH VARYING WIDTHS OF TULIPS PLANTED ON THE LEADING EDGE OF BEDS. PHOTO COURTESY OF GUILFORD ASSOCIATION.



NOTE THE OPEN LAWN AREAS MOSTLY FREE OF TREES AS DEPICTED IN THIS IMAGE FROM 1953, AND UPRIGHT EVERGREENS ARE PLANTED WITHIN THE BEDS, NOT OUT IN OPEN AREAS. PHOTO FROM GUILFORD ASSOCIATION.



THIS A. AUBREY BODINE IMAGE DEPICTS UPRIGHT EVERGREENS IN WOODLAND BEDS



NOTE THE MIX OF UPRIGHT EVERGREENS, DECIDUOUS SHRUBS, UNDERSTORY, & CANOPY TREES IN THIS A. AUBREY BODINE IMAGE

SHERWOOD GARDENS

November 5, 2013



NEWLY INTRODUCED SHRUBS & SMALL UNDERSTORY TREES INTERRUPT WHAT WAS INTENDED TO BE AN OPEN VIEW INTO THE GARDENS FROM THIS GATEWAY VANTAGE POINT AT INTERSECTION OF GREENWAY & STRATFORD

SHRUBS BLOCK THE VIEW INTO THE PARK AND SHOULD BE REMOVED. THE BED SHAPE ITSELF DOES NOT DRAW THE EYE INTO THE PARK AT THE INTERSECTION OF STRATFORD & UNDERWOOD



THE LONG AXIAL VISTA. THE IMMEDIATE BED ACTUALLY DISTRACTS THE EYE FROM BEING DRAWN INTO THE LONG VIEW, AND SHOULD BE SHIFT OVER TO ONE EDGE & ONLY PLANTED WITH TULIPS, NOT SHRUBS.

THIS BED HAS VERY LINEAR EDGES AND VERY LINEAR PLANTINGS. MORE CURVES IN BOTH BED SHAPE AND PLANTINGS WITHIN WOULD CREATE INTEREST AND RELATE TO THE HISTORICAL PLANTING DESIGN OF THE GARDENS.



THIS BED SEEMS TO HAVE NO HISTORIC RELEVANCE, AND IMPEDES VIEWS INTO THE PARK. FURTHER, THE EXISTING ROSES AND AZALEAS ARE PLACED IN PERFECT, MORE OR LESS LINEAR GROUPINGS WHICH IS COUNTER TO THE CURVING NATURE OF OLMSTED DESIGNS AND THE PICTURESQUE & PASTORAL DESIGN STYLES THAT WERE IN VOGUE DURING THE EARLY 20TH CENTURY



EVEN NUMBER OF SHRUBS PLACED PERFECTLY AROUND THE UTILITY CALLS MORE ATTENTION TO THIS AREA AND IS NEITHER PASTORAL OR PICTURESQUE IN PLANTING STYLE. IN ADDITION, THE CHOICE OF FORSYTHIA CLASHES WITH TULIPS & IS A SUBURBAN PLANT.



THIS LINEAR SCREENING HEDGE NEEDS TO BE SOFTENED WITH ADDITIONAL PLANTINGS IN FRONT AND A LARGER, CURVING BEDLINE.



SOME BEDS LIKE THIS ONE ARE PERFECT CIRCLES OR OVALS, AND ARE COUNTER TO THE CURVING BED STYLE OF OLMSTED & THE ORIGINAL SHERWOOD BEDS

THESE THICK UNDERSTORY TREES (FRINGETREES) BLOCK VIEWS INTO THE PARK NEAR CORNER OF GREENWAY & STRATFORD, AND COULD BE TRANSPLANTED AND GROUPED CLOSER TOGETHER.



A GOOD EXAMPLE OF THE PASTORAL DESIGN STYLE & THE INTENT OF THE OLMSTED DESIGN ALONG STRATFORD ROAD, THE LARGE CANOPY TREE SITS OUT JUST BEYOND CURVING BEDS WITH SINUOUS DRIFTS OF AZALEAS AND VARYING WIDTH BED SPACE FOR TULIPS. THIS IMAGE IS ALSO A GOOD EXAMPLE OF HOW LARGE CANOPY TREES LINE THE EDGES OF THE GARDENS ALONG THE EXISTING ROADS AS WELL AS ALONG THE NEIGHBORING PROPERTIES ON SOUTH SIDE OF GARDENS.



A GOOD EXAMPLE OF THE PICTURESQUE STYLE WITH THICK PLANTINGS, LAYERED BEDS, AND THE COMBINATION OF CONTRASTING TREE TYPES (BLUE ATLAS CEDAR AMONGST DECIDUOUS CANOPY TREES IN BACKGROUND).



WHILE SUCH UPRIGHT EVERGREENS DID EXIST HISTORICALLY WITHIN THE GARDENS, THEY TENDED TO BE WITHIN LARGE BEDS AND TO THE SIDES, AND NOT BLOCKING LONG VISTAS.

THE GROVE OF TREES IS FITTING, BUT UNDERNEATH IS BARE AND PERFECT AREA FOR INTRODUCTION OF LOW MAINTENANCE SHRUBS & PERENNIALS. THE ADJACENT AZALEA BED COULD BE EDITED OUT SINCE IT ONLY BLOCKS VIEWS TOWARDS LARGER BED BEYOND FROM GREENWAY.



A GOOD EXAMPLE OF A GROUPING OF 3 OF THE SAME UNDERSTORY TREES WITH PERENNIALS BELOW. IN CERTAIN AREAS OF THE GARDENS UNDERSTORY GROUPINGS OF 3 TREES HAVE NOT BEEN REPLACED WITH LIKE TREES THEREBY CREATING A MIXED BAG OF PLANTS THAT NO LONGER READS AS STRONG.

A GOOD EXAMPLE OF HOW LARGE, CURVING BEDS CREATE OVERLAPPING DRIFTS OF COLOR FROM THE FOREGROUND TO THE BACKGROUND. THE BED ON THE LEFT COULD USE A COUPLE NEW CANOPY TREES AND MORE APPROPRIATE UNDERSTORIES.



SHERWOOD GARDENS

November 5, 2013



SHERWOOD GARDENS

November 5, 2013



BEFORE IMAGE AT CORNER OF GREENWAY AND STRATFORD



BEFORE IMAGE LOOKING FROM STRATFORD ROAD TO HIGHFIELD ROAD



BEFORE IMAGE AT CORNER OF UNDERWOOD AND STRATFORD



AFTER IMAGE AT CORNER OF GREENWAY AND STRATFORD - REMOVE EXISTING KNOCK OUT ROSES, FRINGE TREES, TWO UNDERSTORY TREES AND SHIFT BEDS TO IMPROVE VIEWS INTO PARK



AFTER IMAGE LOOKING FROM STRATFORD ROAD TO HIGHFIELD ROAD - REMOVE EXISTING CIRCULAR BED AND EVERGREEN TREES TO IMPROVE VIEWS THROUGH PARK AND MIMIC HISTORIC DESIGN INTENT



AFTER IMAGE AT CORNER OF UNDERWOOD AND STRATFORD - REMOVE EXISTING KNOCK OUT ROSES, ONE UNDERSTORY TREE AND SHIFT BEDS TO IMPROVE VIEWS INTO PARK

SHERWOOD GARDENS

November 5, 2013



SHERWOOD GARDENS

November 5, 2013



SHERWOOD GARDENS

November 5, 2013



IN PHASE 3 OR BEYOND WHEN EXISTING CHERRY TREE DIES, REPLACE WITH AN UPRIGHT CANOPY TREE THAT IS TAP ROOTED VERSUS SHALLOW ROOTED, SUCH AS SCARLET OAK, PIGNUT HICKORY, OR MOCKERNUT HICKORY

NEW DEODORA CEDAR TO MATCH OTHERS WHEN EXISTING CRABAPPLE TREE DIES; CEDAR WILL THEN CREATE A SET OF 3 CEDARS IN THIS AREA THAT RELATE TO EACH OTHER AND HELP DEFINE THE SPACE

NEW LARGE UNDERSTORY TREE, PERHAPS A DECIDUOUS MAGNOLIA OR A SOURWOOD

NOTE: UNLESS WHERE NOTED ON PHASED PLANS, WHEN A MATURE CANOPY OR UNDERSTORY TREES DIE, REPLACE THEM WITH THE SAME SPECIES. HOWEVER, AVOID PLANTING RED MAPLES IN LAWN AREAS AND IN TULIP BEDS DUE TO THEIR DEEP SHADE AND SHALLOW ROOT SYSTEMS. ONLY PLANT RED MAPLES IN WOODLAND BED EDGES ALONG SOUTHERN EDGE OF GARDENS. ALSO DO NOT REPLACE ASH TREES WITH ASH TREES UNLESS ASH BORER NOT AN ISSUE; RATHER REPLACE WITH EITHER WILLOW OAKS, BLACK GUM, OR BITTERNUT HICKORY IN LOW-LYING AREAS AND HONEYLOCUST, KENTUCKY COFFEE TREE, PIGNUT HICKORY, OR MOCKERNUT HICKORY IN UPLAND AREAS. IN ADDITION, DO NOT REPLACE NORWAY MAPLES WITH NORWAY MAPLES, RATHER PLANT SCARLET OAK, WHITE OAK, OR WILLOW OAK.

WHEN THIS SUPPOSED ELM DIES IN FUTURE, REPLACE WITH A PRINCETON OR VALLEY FORGE AMERICAN ELM

REPLACE EXISTING TREE OF HEAVEN (AILANTHUS) WITH NATIVE CANOPY TREE SUCH AS WHITE OAK, HONEYLOCUST, OHIO BUCKEYE, YELLOW BUCKEYE, PIGNUT HICKORY, MOCKERNUT HICKORY, OR KENTUCKY COFFEE TREE

IN PHASE 3 OR BEYOND ONCE THIS EXISTING BEECH TREE DIES, DO NOT REPLACE IT WITH A NEW TREE IN ORDER TO ALLOW FOR MORE LIGHT TO TURF BELOW; ALL OTHER EXISTING TREES WITHIN THIS GROVE SHOULD BE REPLACED WHEN THEY DIE IN CLOSE PROXIMITY TO THEIR EXISTING LOCATIONS; CANOPY TREES IN THIS AREA SHOULD BE A NATIVE REPRESENTATION OF BOTTOMLAND/RIPARIAN SPECIES, SUCH AS BLACK GUM, SWEET GUM (FRUITLESS TYPE), SYCAMORE, GREEN ASH (ONLY IF EMERALD ASH BORER NO LONGER A THREAT), PIN OAK, WILLOW OAK, SWAMP WHITE OAK, AMERICAN BEECH, & BITTERNUT HICKORY; RETAIN A COUPLE UNDERSTORIES ON NORTHERN EDGE OF THIS GROVE AS CURRENTLY EXISTS (CURRENT SPECIES ARE DECIDUOUS MAGNOLIA & CRABAPPLE)

IN PHASE 3 OR BEYOND, REPLACE EXISTING CRAPMYRTLES IN THIS BED WITH NATIVE WOODLAND UNDERSTORY TREES SUCH AS A COUPLE OF DOGWOODS AND A REDBUD WITH A YELLOWWOOD AT OTHER END; ADD PERENNIALS OR SMOOTH HYDRANGEA RIGHT AROUND TREE BASES TO LIMIT ROOT DISTURBANCE

REMOVE EXISTING PINETREE & REPLACE WITH 1 AMERICAN HOLLY

BEDS ALONG EDGES RE-SHAPED TO CREATE MORE DISTINCTIVE CURVES & TO INCREASE SCREENING

NEW DRIFT OF AZALEAS, DWARF FOTHERGILLA, SMOOTH HYDRANGEA, CLETHRA, OR VIRGINIA SWEETSPIRE

IN PHASE 3 OR BEYOND WHEN 2 CHERRY TREES AND 1 CRAPMYRTLE DIE IN THIS BED, REPLACE WITH 2 DOGWOODS AND 1 REDBUD; ADD AN UPRIGHT EVERGREEN (EMERALD GREEN ARBORVITAE)

CLUMP OF NEW PRAGUE VIBURNUMS

ONLY REMOVE THIS MEMORIAL TREE IN FUTURE WHEN IT HAS DIED; SHIFT MEMORIAL PLAQUE TO A NEW PHASE 3 TREE PLANTED IN MEMORY OF SAID PERSON ON PLAQUE

NEW SINGLE STEM, MORE UPRIGHT UNDERSTORY SUCH AS A YELLOWWOOD OR SOURWOOD; NOT A DECIDUOUS MAGNOLIA

NEW CANOPY TREE SUCH AS SCARLET OAK, MOCKERNUT HICKORY, PIGNUT HICKORY, KENTUCKY COFFEE TREE, OHIO BUCKEYE, YELLOW BUCKEYE, OR AMERICAN ELM (VALLEY FORGE OR PRINCETON)

TIGHTEN UP GAP BETWEEN THESE TWO BEDS IN ORDER TO RE-CALL THE ORIGINAL ONE LARGE BED & TO ALSO CREATE A VARYING WIDTH LAWN SPACE BETWEEN THESE TWO BEDS (CURRENTLY THE LAWN SPACE BETWEEN TWO BEDS IS VERY UNIFORM IN WIDTH)

REPLACE ALL SPIREA, EUONYMUS, & EVERGREEN PRIVET WITH INKBERRY & PIEDMONT RHODODENDRONS

REPLACE BUTTERFLY BUSH WITH A SPECIMEN PINXTERBLOOM AZALEA; PINXTERBLOOM HAS ATTRACTIVE FLOWERS & ATTRACTS BUTTERFLIES

ADD SOME PRAGUE VIBURNUMS IN DRY SHADY AREAS

IN PHASE 3 OR BEYOND WHEN EXISTING UNDERSTORY TREES IN THIS BED DIE, REPLACE WITH DOGWOODS & REDBUDS TO REFLECT HISTORICAL PLANTING DESIGN IN THIS MORE WOODLAND BED

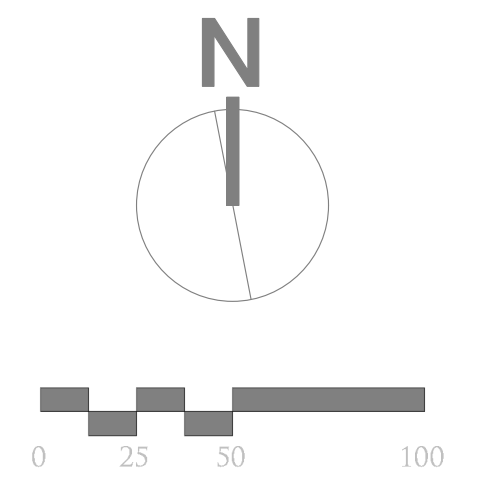
1 NEW WHITE OAK

NOTE: AS JAPANESE EUONYMUS DIES OR DECLINES, REMOVE IT & DO NOT PLANT THIS SPECIES. RATHER REPLACE IT OVER THE YEARS WITH A MIX OF AMERICAN HOLLIES, PIEDMONT RHODODENDRON, HENRY HICKS SWEETBAY MAGNOLIA, PRAGUE VIBURNUMS, LEATHERLEAF VIBURNUMS, INKBERRY, AND SCHIP LAUREL; GROUP LIKE SPECIES TOGETHER & ACCOUNT FOR CONTEXT (IE. ADD LIKE SPECIES TO EXISTING SPECIES UNLESS TOO MANY OF THE SAME IN ONE AREA, AND DO NOT CREATE A HEDGE LOOK, RATHER VARY PLANTING WIDTH OF COMMON SPECIES PLANT DRIFTS); SPRINKLE IN A FEW AMERICAN BOXWOOD, DEE RUNK BOXWOOD, AND/OR JOHN BALDWIN BOXWOOD FOR ACCENT PIECES IN BORDERS AS WHAT IS SEEN IN HISTORIC PHOTOS OF THE GARDEN BORDERS.

NOTE: IN GARDEN WOODLAND EDGES (ALONG SOUTH EDGE OF GARDENS AND ON EITHER SIDE OF GARDEN STRIP RUNNING DOWN TO HIGHFIELD ROAD, SPRINKLE IN OAKLEAF HYDRANGEAS, NATIVE AZALEAS, BOTTLEBRUSH BUCKEYES, SMOOTH HYDRANGEA, & FOTHERGILLA. IN WETTER AREAS OF BORDERS, USE SWAMP AZALEA, CLETHRA, VIRGINIA SWEETSPIRE, BUTTONBUSH, WINTERBERRY, RED CHOKEBERRY, SPICEBUSH, NINEBARK, AMERICAN ELDERBERRY, SOUTHERN ARROWWOOD VIBURNUM, & POSSUM-HAW VIBURNUM. ADD SEVERAL AMETHYST FALLS AMERICAN WISTERIA IN WOODLAND BED EDGES & TRAIN AS SMALL TREES ON WOODEN POSTS/TRELLIS AS WAS HISTORICALLY DONE WITH WISTERIA IN THE GARDENS.

Legend

- Existing plant beds to remain
- Phase 3 - proposed bed additions
- Phase 3 - proposed tree and/or shrub removal
- Phase 3 - proposed tree additions



SHERWOOD GARDENS

November 5, 2013



SHERWOOD GARDENS

November 5, 2013



monarda didyma - bee-balm



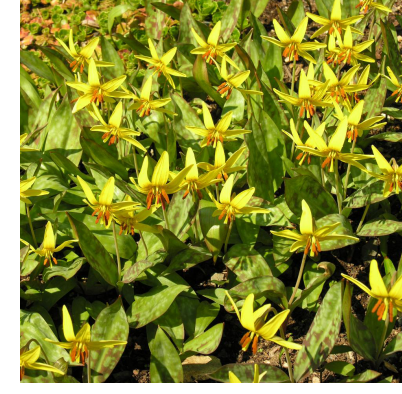
husker red penstemon



autumn bride heuchera



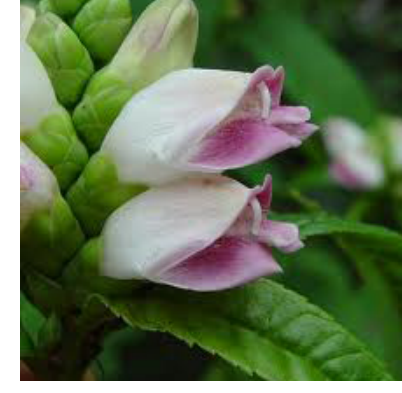
virginia bluebells



e. americanum - yellow trout lily



dicentra eximia - wild bleeding heart



chelone glabra - turtlehead



chelone lyonii - hot lips turtlehead



trillium undulatum



christmas fern



false solomon seal



m. canadense - canada mayflower



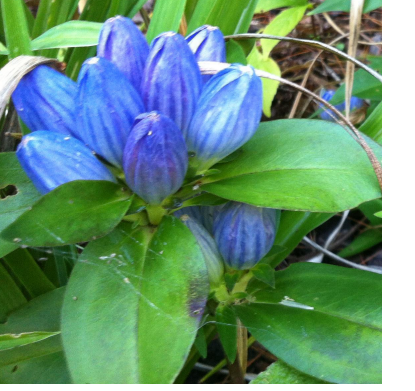
wild ginger



aralia racemosa - spikenard



heuchera americana



gentiana andrewsii - bottle gentian



iris cristata - dwarf crested iris



tiarella - foamflower



g. maculatum - wood geranium



c. coelestrum - blue mistflower



white wood aster



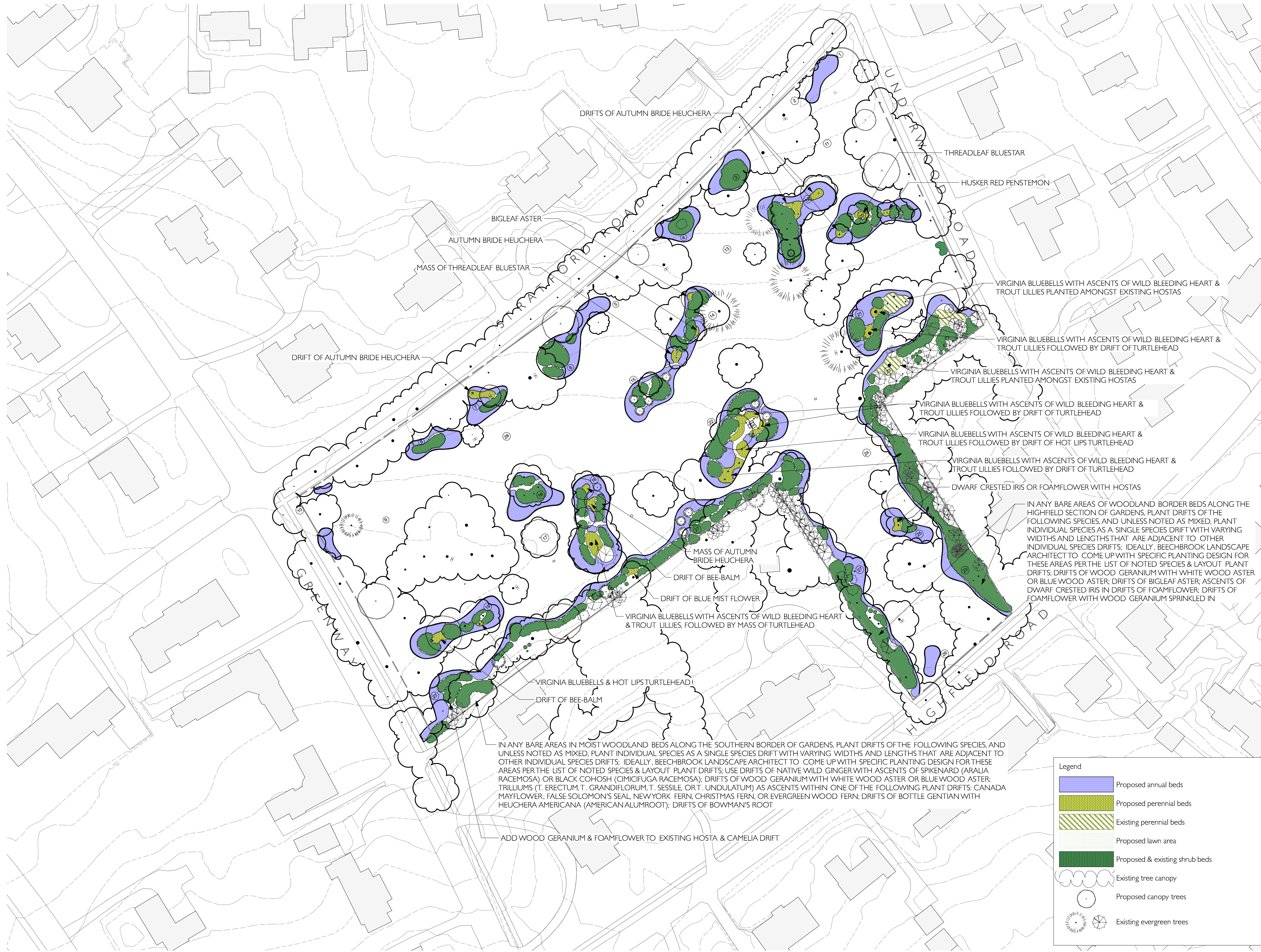
blue wood aster



gilenia trifoliata - bowman's root

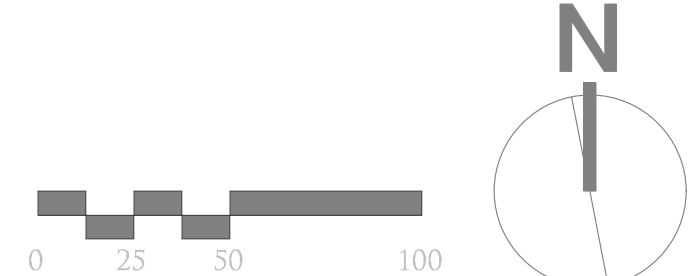


bigleaf aster



Legend

- Proposed annual beds
- Proposed perennial beds
- Existing perennial beds
- Proposed lawn area
- Proposed & existing shrub beds
- Existing tree canopy
- Proposed canopy trees
- Existing evergreen trees



SHERWOOD GARDENS

November 5, 2013

THE LONG-RANGE MASTER PLAN FOR SHERWOOD GARDENS RETURNS THE GARDENS TO THEIR FORMER GLORY AND ACCOMMODATES CONTINUED NEIGHBORHOOD VISITATION AND USE. FROM THE 1960'S THROUGH THE LATE 1970'S, PORTIONS OF THE GARDENS WERE TWEAKED AND MODIFIED AWAY FROM THEIR ORIGINAL DESIGN AND INFLUENCE. DURING THOSE YEARS, NEW BEDS WERE INTRODUCED INTO WHAT HAD BEEN HISTORICALLY OPEN AREAS, WHILE OLDER BEDS WERE REDUCED IN SIZE AND FRAGMENTED. FROM THE 1970'S UP TO RECENT YEARS, NEW TREES AND SHRUBS WERE ALSO ADDED INTO WHAT HAD BEEN HISTORICALLY OPEN AREAS AND OPEN GATEWAY BEDS. THE RESULT OF THESE TRANSFORMATIONS IS A GARDEN THAT HAS BECOME CLUTTERED, FRAGMENTED, AND IN-COHESIVE. HISTORIC, OPEN VISTAS INTO THE GARDENS HAVE BECOME COMPROMISED DUE TO THE INCREASED PLANTINGS IN OPEN AREAS, AND IF UNCHECKED, THESE VISTAS WOULD CONTINUE TO VANISH. THE LONG RANGE MASTER PLAN DE-CLUTTERS THE GARDEN THEREBY OPENING BACK UP THE HISTORIC VISTAS AND CREATING THE LARGE OPEN LAWN ROOMS OF FORMER YEARS THAT ARE FRAMED BY REDEFINED AND RECONNECTED BEDS. THE REDEFINED BED SHAPES ARE GROUNDED AND INFLUENCED BY THE HISTORIC SHERWOOD BED SHAPES AND BY THE OLMSTED BROTHERS PLAN FOR STRATFORD GREEN (A GOOD CHUNK OF THE PRESENT DAY SHERWOOD GARDENS).

