

The Guilford News

GUILFORDASSOCIATION.ORG

SUMMER 2023

Guilford's Own Arboretum

KELLI COMBERIATE

STRATFORD GREEN (AKA SHERWOOD GARDENS) RECEIVES PRESTIGIOUS ARBORETUM ACCREDITATION

At the recommendation of Baltimore City Forestry's Samuel Sao, Patrick Nolan, the Guilford Association's Manager, applied for Stratford Green to become accredited as a Level 1 Arboretum through The ArbNet Arboretum Accreditation Program and The Morton Arboretum.

ArbNet awarded Stratford Green the accreditation in June of this year for achieving particular standards of professional practices deemed important for arboreta and botanic gardens. Stratford Green is also now recognized as an accredited arboretum in the Morton Register.

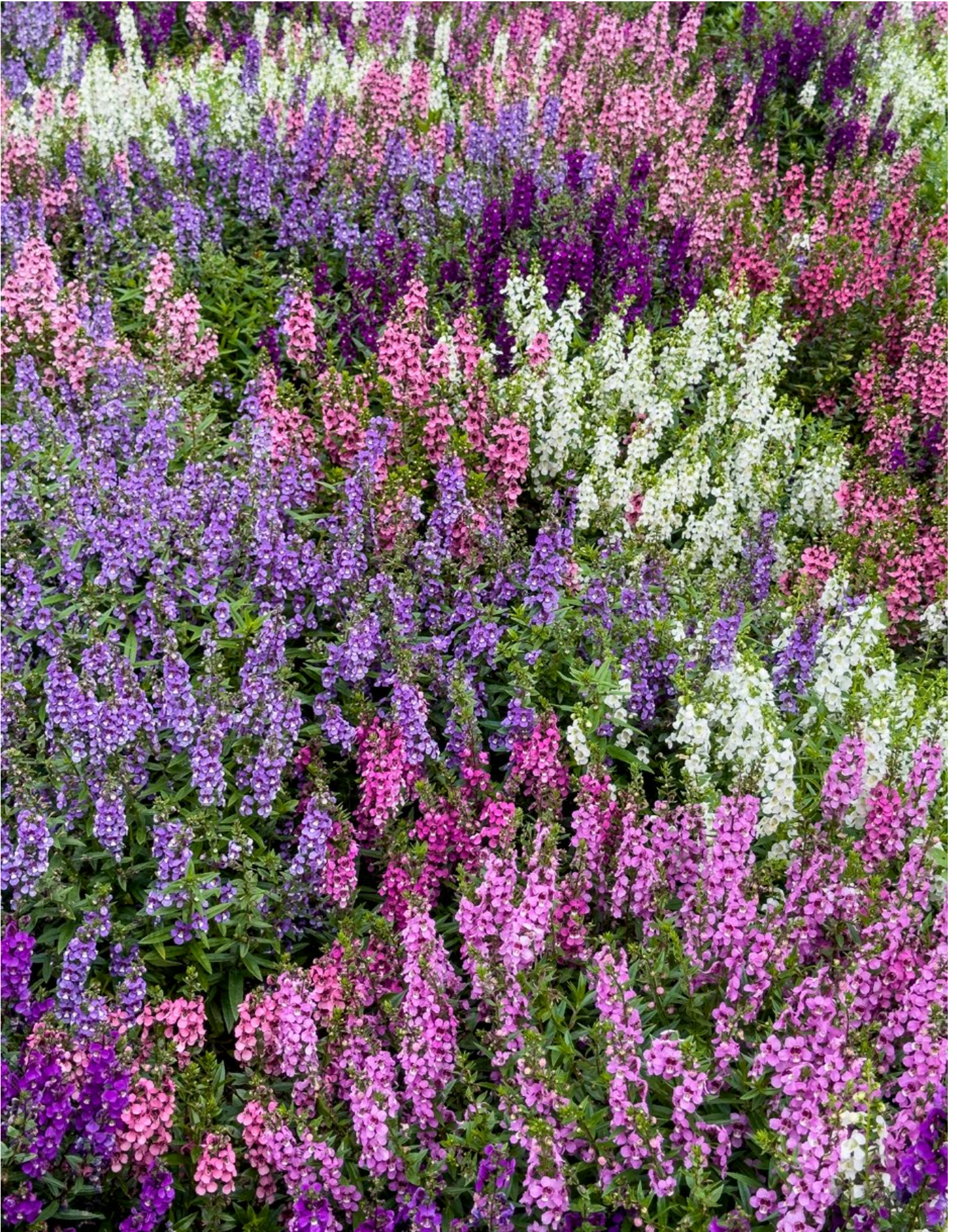
ArbNet is an interactive, collaborative, international community of arboreta. The ArbNet Arboretum Accreditation Program is the only global initiative to officially recognize arboreta at various levels of development, capacity, and professionalism.

"ArbNet accreditation was a logical next step for Stratford Green, with the park serving as both a botanical garden and now, an arboretum. As Stratford Green is 100% funded by private donations, the Trustees were especially interested in grants and

See **ARBORETUM**, page 6

Stratford Green, famous for Sherwood Gardens and its annual tulip display, also has a wonderful collection of trees, with a growing emphasis on native species. The collection includes some mature elms, oaks, sweet gums, and bald cypress.





GREG PEASE PHOTOGRAPHY



I hope you have enjoyed the summer, despite the heat and despite the disturbing uptick in crime that Guilford and its neighboring communities have been experiencing.

Your Guilford Safety Committee is working with Major Johnson, Commander of the the Northern District, Baltimore Police Department, on the apprehension of perpetrators and on crime preventative measures. Wolf Security's hours of patrol have been adjusted, police patrols throughout the neighborhood have been increased, and a sting operation is in use.

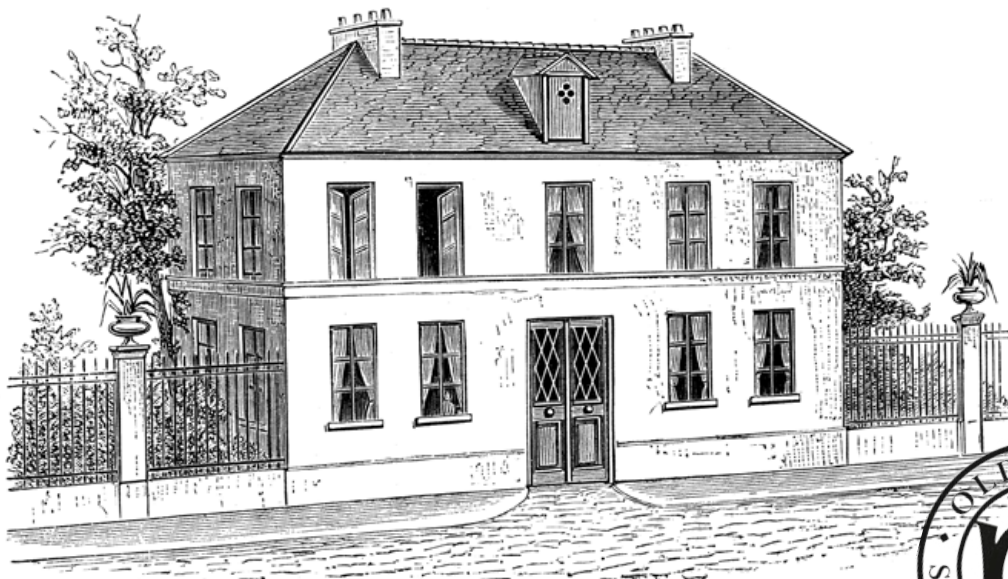
Residents have a part to play, too. Simply put, "when you see something, say something." That is, don't hesitate to call 911 immediately. Take obvious precautions: leave nothing in your car, lock your car doors, employ outdoor lighting around your home, use an alarm system, install video, join CityWatch.

We held a virtual meeting with the Baltimore Police Department Northern District on August 23 so that residents could express their concerns, offer suggestions, ask questions, and learn exactly what to do to improve the safety and security of our neighborhood. Notes from that meeting were emailed to residents and are reprinted in this issue of *The Guilford News*.


On a happy note, please visit Sherwood Gardens, our newly designated Arboretum, accredited by ArbNet: the Global Interactive Community of Arboreta, now abundant in summer blooms. It is a great way to relax and rejuvenate your appreciation of the Guilford Community.

Margaret Alton
President

Your house might have been built 100 years ago...
but that doesn't mean you have to live with leaks.



Regular slate maintenance is your best defense against roof leaks.
Schedule an estimate at oldeworldslate.com, or call 443-829-5359.
 MHIC #100174





PETIT LOUIS BISTRO

It's fun! It's French!

Lunch, Brunch & Dinner

4800 Roland Avenue | 410.366.9393 | petitlouis.com




JOHNNY'S

THE RELAXED ROLAND PARK RESTAURANT

4800 Roland Avenue | 410.773.0777 | johnnysdownstairs.com



4419 LINKWOOD RD
 List Price: \$675,000
 Closing Price: \$776,000

4404 BEDFORD PL
 List Price: \$679,000
 Closing Price: \$690,000

4418 UNDERWOOD RD
 List Price: \$635,000
 Closing Price: \$627,000

4405 UNDERWOOD RD
 List Price: \$549,000
 Closing Price: \$555,000

4309 RUGBY RD
 List Price: \$1,200,000
 Closing Price: \$1,250,000

4216 GREENWAY
 List Price: \$975,000
 Closing Price: \$995,000

45 WARRENTON RD
 List Price: \$1,195,000
 Closing Price: \$1,100,000

4201 GREENWAY
 List Price: \$1,375,000
 Closing Price: \$1,237,500

Guilford Property Sales

MAY 1 – AUGUST 31, 2023

207 E. HIGHFIELD RD
 List Price: \$2,675,000
 Closing Price: \$2,525,000

223 WENDOVER RD
 List Price: \$740,000
 Closing Price: \$815,000

2 E. HIGHFIELD RD
 List Price: \$915,000
 Closing Price: \$875,000

4101 N. CHARLES ST
 List Price: \$1,549,000
 Closing Price: \$1,390,000

7 WENDOVER RD
 List Price: \$919,500
 Closing Price: \$936,000

207 WENDOVER RD
 List Price: \$1,398,500
 Closing Price: \$1,385,000

3904 SAINT PAUL ST
 List Price: \$1,090,000
 Closing Price: \$1,050,000

3805 SAINT PAUL ST
 List Price: \$1,250,000
 Closing Price: \$1,275,000

3812 GREENMOUNT AV
 List Price: \$249,900
 Closing Price: \$225,000

3803 SAINT PAUL ST
 List Price: \$1,200,000
 Closing Price: \$1,200,000

3805 FENCHURCH RD
 List Price: \$649,000
 Closing Price: \$653,000

Active Properties

AS OF AUGUST 31, 2023

List price

| | |
|----------------------------|-------------|
| 3703 N. CHARLES ST* | \$1,399,000 |
| 4304 SAINT PAUL ST* | \$979,400 |
| 4102 UNDERWOOD RD | \$899,900 |
| 410 BRETTON PLACE* | \$399,500 |
| 4307 WENDOVER RD | \$390,000 |
| 3622 GREENMOUNT AV | \$350,000 |

*Under Contract

14 E. BISHOPS RD
 List Price: \$869,900
 Closing Price: \$850,000

406 BRETTON PL
 List Price: \$435,000
 Closing Price: \$385,000

408 BRETTON PL
 List Price: \$412,000
 Closing Price: \$412,000

3518 GREENMOUNT AV
 List Price: \$400,000
 Closing Price: \$392,000

312 SOUTHWAY
 List Price: \$599,900
 Closing Price: \$585,000

405 SOUTHWAY
 List Price: \$475,000
 Closing Price: \$475,000

Property sales data is from MRIS (Metropolitan Regional Information Systems, Inc.) and was provided courtesy of Barbara J. Cox, Cummings & Co. Realtors 410-960-8666 (mobile), 410-823-0033 (office)

GREG PEASE PHOTOGRAPHY



Being accredited as an arboretum fits perfectly with the mission of Stratford Green to be for enjoyment and botanical education. The accreditation will also open up opportunities for grants and other types of support.

ARBORETUM, *From page 1*

other funding opportunities available to accredited arboreta,” says Nolan.

The goals of the ArbNet accreditation program are “to foster the establishment and professionalism of arboreta; identify arboreta capable of participating or collaborating in certain scientific, collections, or conservation activities; and advance the planting, study, and conservation of trees to improve the world,” explains ArbNet in their application form.



ArbNet supports the common purposes and interests of tree-focused public gardens. Since its inception, the organization has accredited over 600 arboreta, across 40 countries.

While being accredited as an arboretum is beneficial for a variety of reasons, including its fit with the mission of Stratford Green to be for enjoyment and botanical education, the main long-term reason for having Stratford Green accredited is that the designation opens up the opportunity to apply for grants and other types of support.

“Stratford Green, famous for Sherwood Gardens and its annual tulip display, was created in the 1920s and follows Olmsted Design Principles by creating a pastoral space with native plants, rare trees and flowering shrubs that are a fitting backdrop for the tulips,” says Nolan.

“Stratford Green has a wonderful collection of trees, with a growing emphasis on native trees. The collection includes some mature elms, oaks, sweet gums, and bald cypress. A variety of crab apples, cherry trees and magnolias provide spring color along with native redbuds, dogwoods and serviceberry. Specimen American hollies are found along some of the garden borders,” Nolan continues.

While Stratford Green is more than six acres in size, it doesn’t have any gates, fences or other barriers, making it quite notable. Although a private park, the public is welcome to stroll at leisure throughout the grounds explains Nolan.

While residents of Guilford have long known and appreciated Sherwood Garden’s special presence in the neighborhood, now tree-enthusiasts worldwide will know of its presence. As of June 2023, there are 40 countries with accredited arboreta, 624 arboreta accredited globally, and 2,336 arboreta worldwide in the Morton Register. If you’re interested in learning more about ArbNet, please visit their website at arbnet.org.

Stratford Green would like to thank Davey Tree for installing additional tree signs and labels at Sherwood Gardens and Beechbrook Landscape Architecture for updating the tree inventory. These contributions helped Sherwood Gardens secure the accreditation.

GREG PEASE PHOTOGRAPHY






Trust your historic home with the skilled craftspeople at **Smithouse Design + Build**



SMITHOUSE
DESIGN + BUILD

www.smithouse.com
410.329.1262
info@smithouse.com

REINVENTED WITH *Luxury*



FB Fick Bros.
Roofing & Exterior Remodeling Company


410-889-5525
www.fickbros.com

MARVIN
AUTHORIZED
REPLACEMENT
CONTRACTOR

A Family Tradition of Providing Quality Workmanship by Professional Craftsman for Over 100 Years and Four Generations

Roofing | Gutters | Slate | Copper | Masonry | Carpentry | Windows | Doors | Exteriors | Historic

CLEAN YOUR DIRTY ROOF! www.FBSOFTWASH.com **Safe Roof & Exterior Cleaning**



Sherwood Pollinator Garden

MICHAEL ANDORSKY

Six years ago, the Baltimore City Master Gardeners, a division of University of Maryland Master Gardeners, created a pollinator garden at Sherwood Gardens.

What is a pollinator garden? How does it differ from other gardens? Why is it important to plant pollinator gardens?

A pollinator garden contains mostly native plants that allow bees, butterflies, and other small animals to transfer pollen from one flower to the next. The pollen combines with ova in the flowers to produce seeds which become new flowers. This process is called cross pollination. Without bees, butterflies, hummingbirds, and other insects to carry the pollen, no flowers would appear each year.

Pollinator gardens need mostly native plants with something blooming from Spring through Autumn. In the United States native plants are those that have been here before the Pilgrims arrived. They are rich in nectar, the sweet plant juice upon which the bees, butterflies, and hummingbirds feed. Although some are not particular about which native plants they visit, many will only go to the specific plants with which they have evolved over the past 130 million years. A pollinator garden provides both a home and a feeding site.

Most of Sherwood Gardens is composed of tulips and annual plants. Tulips do not require cross pollination and have no nectar. Many annuals lack nectar as well. None of these flowers provides habitat for bees, butterflies and hummingbirds.

Pollinator plant loss due to building of roads and communities, pesticide use, and climate change result in less habitat for pollinators. As a result, bees, butterflies, and hummingbirds are under threat of extinction.

Besides being a home for pollinators, a pollinator garden is a beautiful space for park visitors to behold. Baltimore City Master Gardeners are here to develop and maintain it. However, this is your garden and you can help. If you are interested in planting or weeding with us, let the Guilford Association office manager know at 410-889-1717 or officemanager@guilfordassociation.org. We will contact you whenever we have a gardening maintenance activity scheduled. If you see anyone trampling over your pollinator garden, shoo them away . . . please.



Celebrating its 6th year, the pollinator garden at Sherwood Gardens features Maryland native plants that are visited by bees, butterflies, insects, and hummingbirds.

“What Does the Fox Say?”

KELLI COMBERIATE



Residents throughout Guilford have reported seeing a greater number of foxes over the past few months.

Foxes actually say a lot. They can make 40 different sounds. The most startling, though, might be its scream, often heard in the middle of the night during the animals' mating season.

Depending on where you're residing in Guilford, you may have noticed an abundance of foxes over the last few months. While there has long been a den in Little Park and some have been spotted in Sherwood Gardens and throughout Guilford, many residents of areas of Guilford have been seeing a whole family on a daily basis.

Residents' reactions have been mixed. Some are fearful or find them a nuisance, although others find them “cute” and interesting to watch. They appear to have made themselves at home on the picturesque streets and gardens with some creating dens and lounging in neighbors' yards.

While residents have grown accustomed to fox sightings over the years, this year seems different. Some residents have indicated regularly observing a whole family of foxes passing through, sleeping and frolicking in the yard. The fox kits, baby and young fox, are particularly playful but can be intrusive sometimes causing concern because of their presence. The foxes have caused anxiety for residents with small children, small dogs or pools. Also, they can leave their waste and pray in unwelcome locations.

According to the Candid project www.thecandidproject.com, “Some wild animals are labeled ‘synanthropic species.’ These species live near humans and directly benefit from human-altered environments like gardens, garbage dumps, and farms.” The red fox is one of these synanthropic species. They're also “known as an ‘edge species,’ which means they naturally occur at the borders between two habitat types, which is called an ‘ecotone,’” says The Candid Project. Their ideal environment is when forest meets grassland.

Red foxes are omnivores who primarily hunt rodents, such as mice, as well as rabbits, hare, insects, and birds. Your pets are likely not at risk, unless they're particularly small and vulnerable such as kittens, rabbits, guinea pigs, and chickens. In general, foxes like to stay close to humans due to our food waste and the rodents that surround said waste.

“Through our own expansion, city developments, and agricultural practices we have created an induced ecotone that mimics in many ways the natural ecotones where red foxes are found naturally in the wild. Human-modified areas often provide a mosaic of habitats: grass and fields where they can hunt, ditches, parks with trees and fragmented woodlands that provide cover and safety, corridors, and even denning opportunities in our green spaces and sometimes under our sheds and houses,” says The Candid Project's website.

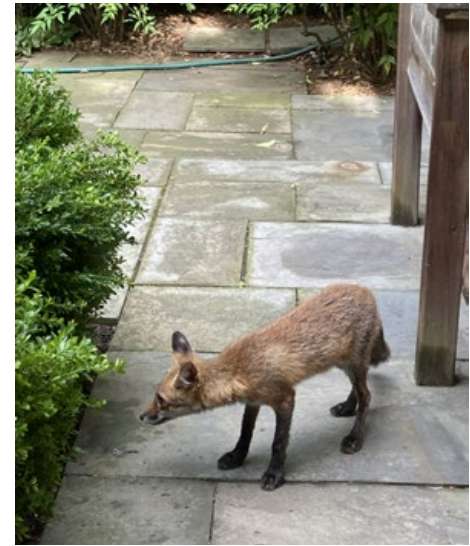
In short, Guilford makes a perfect environment for these animals. The Humane Society recommends leaving foxes alone. They're generally more scared of us, than we are of them. If they don't appear scared, it's likely due to people feeding them. If you are scared, The Humane Society recommends making loud noises, dousing them with water from a hose or a squirt gun, or throwing an object such as a tennis ball towards them.

“Foxes are not dangerous and do not attack humans, except when they are rabid, which is very rare, or when they are captured and handled. Even then, a fox's natural tendency is to flee rather than fight,” says The Humane Society's website.

They explain that foxes make up about 7% of cases reported to the Centers for Disease Control and Prevention, but the fox



Fox kits, baby and young fox, are cautious around people but are very curious. Human homes and yards provide them with optimal habitat and food.



strain of the disease has rarely (if ever) been transmitted to a human in the U.S.

Many times a mange-stricken fox may be mistaken for a rabid one due to their sickly and unafraid appearance. When animals are afflicted by mange, they try to maintain their body temperature by seeking a warm place to rest. If you see a fox that you suspect is infected, contact a local wildlife rehabilitator, as mange is a treatable condition.

In general, coexistence should be the goal as foxes and other wild animals have migrated into urban areas and cannot be effectively deterred. We've had past articles on the barred owls that delight many residents and the deer that are more problematic, particularly for gardeners. References including the Natural History Museum indicate that foxes are self-regulating, constrained by available food and territory. Culls generally do not work. It has been found that removing a fox from a neighborhood frequently results in that territory being claimed by another in short order.

That being said, if you have a fox or fox den in your yard and are uncomfortable, there are humane ways to encourage them to leave according to The Humane Society. Their website recommends these options once the kits have appeared, "Loosely pack leaves, soil or mulch in the den openings to disturb the residents; place urine-soaked kitty litter, a sweat-soaked T-shirt, a pair of smelly sweat socks or old sneakers in or near the den opening; mount shiny party balloons or 12-18 inch lengths of Irri-tape on sticks or poles a few feet off the ground just outside the den entrance; (or) spread capsicum-based granular repellent around the den entry."

These techniques will encourage the fox parents to move their litter to a safer location. To deter them in the future you can

purchase a motion-activated sprinkler or a motion-sensitive alarm. Another option is to purchase products sold in hardware stores that are meant to repel dogs from gardens and yards. It will have a similar effect on foxes.

No matter your thoughts and feelings on these adaptable mammals, it appears they're here to stay in Guilford, much like the deer, birds, and squirrels we've grown accustomed to. Take precautions when it comes to your small animals, and use one of the methods recommended by The Humane Society outlined above if you want to deter their presence in your yard. But, it may be best to find a way to live in tandem with these sly creatures. Red foxes are one of the most common non-domestic carnivores in cities around the world.



Beautiful pastries and desserts
on display at Baltimore's Bonjour
French Bakery and Cafe.

A Slice of Paris in Baltimore

KELLI COMBERIATE

If you've spent any time in the Mt. Washington neighborhood of Baltimore, you may have noticed a charming purple building off of Falls Rd. If you've never been inside, you're in for a treat. This French bakery is owned by former long-time Guilford residents, Gerard Billebault and Gayle Brier-Billebault.

"In 1998, a charming little house on Falls Road that had once been a fruit and vegetable stand became available, and I immediately felt that this wonderful old purple house would be the perfect place to open a French-inspired bakery and cafe. Promising my husband, Chef Gerard Billebault, that it would only be a temporary "open just for the holidays" venture, he reluctantly said, 'oui,' Gayle recounts on their website, bonjourbakerycafe.com.

What was supposed to be temporary, turned into a long-term business. Bonjour has been serving the Baltimore community for more than 24 years. Frequent customers have come to rely on their delicious French pastries, desserts, sweets and savorys, as well as freshly roasted coffees and teas to start their day. Custom orders for a special event are also available upon request.



Former long-time Guilford resident Gayle Brier-Billebault and her husband Gerard have been operating the Bonjour French Bakery and Cafe on Falls Road for more than 2 decades.

Gayle attributes their longevity to her husband, Gerard. "Without him, there would be no Bonjour. Even after a more than 50-year career as a pastry chef, he's still excited and takes an innovative approach to the things that we make." She added that his creativity and undying interest in new things has helped Bonjour with its success.

In terms of who comes up with their mouth-watering treats, "It's a shared experience," says Gayle. "We have a creative staff in



Inside a charming purple house on Falls Road, you'll find pastry chef Gerard Billebault creating delicious French pastries, desserts, sweets and savorys.

the kitchen who work with Gerard. And I'm very opinionated about food. I offer my opinions and taste buds whether I'm asked or not."

While they have many popular items, their almond croissant is not to be missed. Just the other day a customer told Gayle, "It's the best thing I eat every time I come here." For those that are gluten-intolerant or have other dietary concerns, fear not. Not only does Bonjour have gluten-free items, they're also happy to review the ingredient list in any of their offerings.

Like many small businesses during the pandemic, staffing was an issue. While they closed for six weeks, which fortunately gave Gerard a rest, they were slammed when they reopened. Gayle explained that they were crazy busy due to people not going out to dinner yet. It was hard for them to maintain their high standard of quality and variety of products, but they persevered.

In the last year, they've brought in almost an entirely new team. "These are young people who are very excited by what we do," says Gayle. She mentioned they have two Ukrainian bakers working with Gerard who are wonderful. They partnered with the International Rescue Committee to be able to provide employment for them and they've both made a great addition to the Bonjour team.

While the Billebaults no longer live on Wendover Rd, you can still find them at Bonjour located at 6070 Falls Road, Wednesday-Sunday from 8am-4pm. Order a delicious coffee supplied by Orinoco Coffee, a local fair trade coffee roaster, and of course an almond (or chocolate!) croissant.

Designers, Artisans and Caretakers of

Exceptional Landscapes

BOB JACKSON



LANDSCAPES,
INC.

Exceptional homes deserve landscapes that reflect their unique beauty, honor tradition and celebrate your family's outdoor lifestyle. Call today to schedule a garden consultation!

410.356.1620 | BobJacksonLandscapes.com



Slate Service Co., Inc.

**BALTIMORE'S TRUSTED
SLATE & COPPER
RESTORATION
SPECIALIST**

-Jill B ★★★★★

Excellent service! Extremely professional! Began work ahead of schedule and we were kept informed of progress through the entire installation. I highly recommend Roland Slate.

Professional Services

- Roofing
- Gutters
- Masonry & Chimney
- Custom Copper Work
- Snow Guards



John & Brittany Rich
(Owners)



(866) 509-2344

estimates@rolandslate.com

325 W 23rd St.

Baltimore, MD 21211

www.rolandslate.com

Family Owned and Operated since 1989

"Old Fashioned Craftsmanship For The Modern Generation"

Guilford Association Residents and The Baltimore Police Department – Northern District – August 23 Meeting Notes

On August 23rd at 6:00pm the BPD Northern District held a Zoom meeting with Guilford residents. The event was organized by Sergeant Olivo. About 35 people were in attendance. Major Azalee N. Johnson led the meeting taking questions from residents.

In response to the question of what preventative measures to take, Major Johnson said the ND is making sure their Officers are patrolling the area more often than in the past. Not only do they have Officers on foot, but also they have additional Officers driving around in both marked and unmarked cars. The Major recommends keeping properties well lit, keeping porch lights on, and installing motion sensors and ring cameras which help with arrests. The ND shares information across the department. So, your ring camera video can assist with incidents nearby.

In terms of preventive measures, the CitiWatch Camera Program is great. You can register your camera with the CitiWatch Camera Program and if there is an incident it will alert the police. A communication will be sent to individuals with date/time/location/etc and the BPD will ask them to review their camera footage if they live near the incident. They're also offering a \$150 rebate for purchasing a camera and registering. Johnson understands that people are apprehensive about the "Big Brother" aspect, but that's not what it is. A CitiWatch descriptive flier will be sent to Guilford to inform residents of the program.

Major Johnson indicated that the BPD Northern District has a weekly intelligence meeting which is attended by Wolf Security. She indicated that the meetings were helpful in sharing information among communities and in identifying people committing crimes.

If an incident does occur, call 911. If you are not comfortable calling 911, email NorthernDistrict@BaltimorePolice.org. Multiple people read these emails, so even if someone is off for the day, it will still get read. Also, impact statements are especially important. Once someone is arrested, these statements are very beneficial when the individual is taken to court, especially if they're an adult.

While some of the crimes that occur are not violent, the BPD doesn't want it to become a violent offense the next time, so they're partnering with the Dept. of Juvenile Justice, Roca, and other organizations. Roca Baltimore works with young men who have been involved in the justice system and who are at high risk of violence.

Another resident asked if there's been a higher number of officers patrolling and the answer is yes. The Major checks the report daily and knows this is the case. Community members have also stated they have noticed an increase. For instance, 7am–3pm is a big shift.

In terms of daytime incidents which are a concern, Johnson recommends "If you see something suspicious, call 911." Be aware of your surroundings, and minimize your phone usage when you're walking so you can see what's happening around you. As stated before, you can email them as well.

There are CitiWatch cameras throughout the district. The BPD has 60 personnel trained to review the footage. This footage along with foot patrol and unmarked cars have made a difference.

A resident was worried about staffing issues, but Johnson was pleased to report that while there is a citywide shortage of officers, the Northern District is fortunate to not be feeling the effects as much as other districts. The ND currently has a 17-19

Do I need to install or configure anything?

No. All we need is the information on the online registration form.

Will the City have access to my camera feeds.

No. The CitiWatch Community Partnership registry just contains basic information about the location, type, and owner of a camera.

Participants will only be contacted if the police believe their camera footage can be useful in the apprehension or prosecution of a suspected criminal.



help.citiwatch@baltimorecity.gov

<https://citiwatch.baltimorecity.gov>

WHY JOIN CITIWATCH?

Many businesses and homeowners in Baltimore City operate private security camera systems. Maintaining an accurate record of these cameras is crucial. It can greatly assist the police in locating valuable evidence, and saving investigative resources—and more importantly, tax-payer time and money.

Not only does the CitiWatch Community Partnership save resources and help police locate evidence, it also allows for faster and more successful apprehension and prosecution of criminals.

Joining the CitiWatch Community Partnership and proudly displaying our placard in your home or business sends a clear message to would be criminals that your community does not tolerate crime, and you are working with the Baltimore Police Department to make your neighborhood safer.

HOW DOES IT WORK?

The CitiWatch Community Partnership asks residents and business owners to register their privately owned camera systems with the City, giving the police fast access to valuable evidence and helping business owners and community members in the apprehension and prosecution of criminals.

If you own a security camera, become part of the CitiWatch Community Partnership by using our simple online registration form, available at citiwatch.baltimorecity.gov.

Registration is completely voluntary and camera owners can choose not to participate at any time. All information is only available to Baltimore Police and authorized personnel.

officer shortage which is a lot better than a year ago. At one point they were 29-30 officers short due to retirement, etc. Now all their shifts are fully staffed, and the ND even has an extra lieutenant on staff.

The BPD changed their recruitment process to be aligned with other agencies. The department has issued incentives for people to move into the city, offered sign-on bonuses for those who go through the recruitment process, training, etc. There is also additional money on the backend. The city has more than 500 open positions.

A question was asked about pressing charges. What happens when charges aren't pressed since many residents decide not to? Johnson says they still want to be informed of the incident even if charges aren't pressed. A 12-year-old can't be arrested for destruction of property (even at 13 or 14), but if you call 911, they can respond. They'll identify the youth and talk to the parents (parents could be held liable, which does help a lot). Major Johnson noted that Wolf Security can't detain people, but the police can.

If an arrest is made, the juvenile who committed the crime (destruction of property) would be taken downtown and possibly released to their parents or the juvenile justice system.

Margaret believes it would be helpful to know when arrests are made. She also wants residents to step up, press charges, and go to court. Johnson agrees and says that can be the difference between a judge throwing out a case versus giving a sentence.

If the victim appears in court, it makes a difference. The BPD really encourages impact statements. They will walk us through what that looks like, but it is essentially "this is the impact it has had on our community".

Another resident asked if there was a dashboard that they could log into to see where these crimes are occurring and if they led to an arrest, prosecution, etc. The resident wants to see something or tap into something rather than going to NextDoor or talking to neighbors.

The Major said prior to redistricting, those dashboards were available on the BPD website. They are currently working to see if everything is accurate (geocoding) after the redistricting. Right now, there are some flaws, but it's 90% complete. Hopefully in the next month it will be back online on the BPD website. It doesn't necessarily give you an arrest if it was made at a later date, but those things are available.

Message from Wolf Security

BRIAN WOLF, PRESIDENT WOLF SECURITY

I would like to extend some information regarding the increase in vehicle thefts throughout the Baltimore region and surrounding counties.

A spokesperson for the Baltimore Police Department recently said auto thefts are up 95 percent over this time last year; Kias and Hyundais representing 41 percent of all stolen vehicles. The Mayor's office released the following statement earlier this summer:

Kia and Hyundai created a nationwide problem in order to save a few bucks. We are joining these other cities to hold them responsible," the statement said. "In addition to making our citizens vulnerable to theft, they have endangered their physical safety, as car thieves are more likely to engage in reckless driving in these stolen vehicles. We hope that this lawsuit not only forces Hyundai and Kia to come up with a viable solution to this problem of their own making but deters other companies in the future from putting profit over public safety.

This issue has not been solely associated with Baltimore City. According to crime statistics obtained by the Channel 11 News I-Team recently, there is a 542% increase in juvenile car thefts in Baltimore County so far this year compared to this time last year. A Baltimore County Police spokesperson recently said social media touting the catch-and-release approach in the juvenile justice system is driving the increase.

Statistics show a motor vehicle was stolen every 32 seconds in the United States in 2022.

While you are driving your vehicle to your destination, please use common sense when parking and exiting your vehicle:

- Take your vehicle's key; do not leave it in or on your vehicle.
- Close and lock all windows and doors when you park.
- Park in well-lit areas if possible.
- Never leave valuables in your vehicle, especially if they can be seen from outside the vehicle.

These tips seem so trivial; however, people do not abide by these, and the results can be devastating. A real-life example from me: I was working as an officer when I got a call from dispatch advising a destruction of property to a vehicle. When I arrived and spoke to the vehicle's owner, she said her side window to her vehicle was broken and her laptop was stolen. She told me her

laptop was under her front passenger seat and not visible; however, she had coins in her open center console, and they were missing also. Fortunately, through the investigation I was able to recover her laptop (which contained her doctoral thesis). Please do not leave anything of value inside your vehicle (whether visible or not).

The following is a list you may not even think about that thieves would like to have:

- Catalytic converters
- Doors
- Air bags
- Transmissions

In addition, these are the "normal items" thieves would like to steal:

- Radios
- Laptops
- Cellular phones
- Purses
- GPS units

Many publications list numerous antitheft systems and devices designed to make vehicles more difficult to steal or easier to trace and recover:

Audible and Visible Devices: These devices, such as a horn alarm, deter theft by bringing attention to an unauthorized attempt to steal or enter a vehicle. Visible devices create a visual threat/warning/deterrence, such as the use of steering-wheel locks, as well as theft-deterrent decals, flashing lights, and window etching.

Immobilizing-Type Devices: These prevent thieves from bypassing a vehicle's ignition system and hot-wiring the vehicle. Some incorporate computer chips in ignition keys or disable the flow of electricity or fuel to the engine.

Vehicle Recovery Systems: These devices use electronic transmission technology that help law enforcement reveal the location of stolen vehicles—and possibly catch the thief in the act. Please remember, park your vehicle in an area where it is not secluded. Make sure all valuables are hidden or not left in your vehicle. Take your keys with you and never leave your vehicle's engine on while you are not inside your vehicle. If you do encounter a problem, immediately call 911 and make a report.

Guilford Association Board

President
Margaret Alton
margaret@guilfordassociation.org
410-889-1717
Parks

Vice President
Tom Hobbs
tom@guilfordassociation.org
Architecture, Legal

Vice President
Jeremy Hoffman
Newsletter

Treasurer/Secretary
Richard Hunt

Association Manager
Patrick Nolan
officemanager@
guilfordassociation.org

Cathy Boyne
Reservoir

Brian Bramhall
Safety

Emily Brennan
Legal, Social

Tim Chriss
Legal

Elizabeth Comer
Architecture

Kevin Creamer
York Rd/Greenmount Ave
Traffic & Streets

Danielle Curry
Safety, Social

Kevin Gaynor
Safety, Legal

Clarke Griffin
Parks, Social

Chris Hardy
Architecture

Jon Kucskar
Traffic & Streets

Kelly Maher
Social
York Rd/Greenmount Ave

Brandon McCullough
York Rd/Greenmount Ave

Erika Nolan
Social

Hillary Williams
Social

Guilford Security

(443)-878-7248

guilfordpatrol@
wolfsecurityinc.com

Officer Don Wilson
Officer Carmelo Carrasquillo

Together, We Thrive

EMILY BRENNAN

On behalf of the Guilford Association Board of Managers, I hope everyone has had a pleasant summer and is enjoying the unique charm that makes our neighborhood a truly special place to call home. It's the collective spirit of our community that has shaped this area into the gem that it is. Now, we invite you to take that spirit a step further by volunteering on one of our neighborhood committees.

Why Join a Committee?

The Guilford Association is a dedicated group of volunteers who work to ensure that our community remains a wonderful place to live, work, and play. Much of that work is done through dedicated committees which focus on specific areas of interest. Committees are chaired by members of the Board of Managers, but any Guilford resident can join a committee, and whether you can spare an hour or a day, your help is welcomed and appreciated.

If you are considering joining the Guilford Association Board of Managers, committee membership is the logical first step. Committee members become engaged in the association in a meaningful way, and in doing so, learn about the needs of the neighborhood from a managerial perspective. Participation in a committee can serve as training to prepare you to take on board responsibilities in the future. Plus, committee membership is a good way to test the waters in terms of commitment and availability, as participation on the Board of Managers requires a more significant investment of time.

What are the various Committees?

Architectural Committee, Tom Hobbs, Chair

The Architectural Committee administers oversight, review and approval of exterior property alterations to ensure that proposed changes are consistent with the covenants contained in the Guilford Deed and Agreement and the Architectural Guidelines and are in keeping with the aesthetic environment of our neighborhood. It is preferred that Committee members have an architectural or planning background although it may not be required, depending on experience. The committee reviews applications monthly as well as monitors properties for covenant compliance.

Finance Committee, Richard Hunt, Chair

The Finance Committee helps to plan the annual budget, track monthly expenses, manage the Association's reserves and investments, as well as other financial management tasks. Committee members do not need to have a finance background, although it is preferred. The committee consults monthly and meets as required.

Legal Committee, Tom Hobbs, Chair

The Legal Committee oversees and coordinates representation in all legal matters concerning the Association. Often, the committee works in tandem with the Architectural Committee to enforce architectural covenants when violations occur. Recently, the Legal Committee worked with law enforcement and the judicial process to evict squatters who had taken possession of a Guilford property. Committee members do not need to have a legal background, although it is preferred.

Newsletter Committee, Jeremy Hoffman, Chair

The Newsletter Committee publishes the quarterly neighborhood newsletter, The Guilford News, which contains articles about Guilford and surrounding areas, and is aimed at keeping residents current on community news and events, property sales, community history, and

makes introductions to new neighbors. Committee members write articles themselves as well as recruit neighbors to contribute to the newsletter.

Parks Committee, Margaret Alton, Chair

The Parks Committee handles landscaping, clean-up initiatives, and maintenance of public spaces, including our four parks (Gateway Park, Little Park, Sunken Park, and Stratford Green/Sherwood Gardens) ensuring that Guilford is attractive and welcoming. Committee members collaborate with various arborists and landscaping vendors, as well as undertake special projects as they arise.

Safety Committee, Kevin Gaynor, Chair

The Safety Committee collaborates with Wolf Security, our security service provider, as well as local law enforcement to ensure that our streets are safe, and our neighborhood security needs are met. Recently, the Safety Committee conducted a neighborhood-wide poll to assess community members' satisfaction with existing security measures. Committee members will work to analyze the results of that poll and to implement strategies to improve security in Guilford.

Social Committee, Erica Nolan & Kelly Maher, Co-Chairs

The Social Committee plans and organizes various community events throughout the year including the annual Easter Egg Hunt, Halloween Costume parade, Neighbor Day, and Holiday Party, as well as movie nights in Sunken Park, Music in Sherwood Gardens and other fun events that foster unity and fun. The committee meets no more than monthly, and committee members are expected to help staff events throughout the year.

Traffic & Streets Committee, Kevin Creamer, Chair

The Traffic & Streets Committee functions as a liaison between the neighborhood and the Baltimore City DOT concerning traffic safety and signage, and maintenance of sidewalks and streets. The committee also works with the City Arborist to ensure maintenance of a healthy tree canopy.

York Road/Greenmount Ave Committee, Kevin Creamer, Chair

The York Road/Greenmount Avenue Committee works alongside the York Road Partnership whose mission it is to "promote the vitality of Baltimore City's York Road community as a desirable urban environment in which to live, shop, work and worship." The Committee also works to ensure unity with and encourage participation from residents of York Courts and Greenmount Avenue.

How Can I Learn More?

The Guilford Association committee chairs are hosting a Wine and Cheese Meet & Greet in September. An email invitation will be sent out to all residents. Attendees can talk to committee chairs about volunteer opportunities and identify the best way to put their specific skills and talents to use for our community.

Many hands make light work, and Committee volunteerism is a great way to make a difference in Guilford while meeting new neighbors and establishing lasting friendships.

We invite you to join us in making a difference. Together, we can ensure that Guilford continues to thrive.

**Best
Breakfast Sandwich
in America**

**America's
Favorite Family
Friendly Restaurants**

**Best Fried
Green Tomatoes
in Maryland**

**Restaurant Hospitality
Magazine**

**FoodNetwork
.com**

**Southern Living
Magazine**

Miss Shirley's[®]

CAFE

Award Winning Breakfast, Brunch & Lunch

**Indoor & Patio Dining,
or order online for Pickup or Curbside!**

Best Al Fresco Dining - Baltimore Magazine Readers' Poll

ROLAND PARK 513 W Cold Spring Ln
INNER HARBOR 750 E Pratt St
ANNAPOLIS 1 Park Pl
Locally & Family Owned

Brunchin'
7 days a week!
8 AM - 3 PM

MissShirleys.com/OrderOnline

**MUSIC EVERYWHERE WITHOUT SPEAKER WIRES
THE ANSWER IS SONOS!**
THE #1 WIRELESS SPEAKER BRAND IN THE WORLD

Soundscape makes it easy for you to have it



Sonos 1 SL

Wireless streaming music speaker with Apple® AirPlay® 2. This compact design fits in just about any space.

Available in Black and White



Sonos Era 100

Wireless powered speaker with Wi-Fi®, Apple AirPlay® 2, and Bluetooth®. This compact design delivers spacious, detailed stereo sound with surprisingly rich, full bass.

Available in Black and White



Sonos Move

Indoor & Outdoor Wireless portable speaker with built-in Amazon Alexa, Google Assistant, Apple AirPlay® 2, and Bluetooth®.

The Sonos Move is both dustproof and water-resistant, so you can use it poolside — or even oceanside.

Available in Black and White

SOUNDSCAPE[®]

406 W Cold Spring Lane Baltimore, MD 21210 410-889-1134
Tuesday - Friday: 10am - 5 pm Saturday 10 am - 5 pm
www.soundscapemd.com



ADR BUILDERS

VISIONARY ADDITIONS DESIGNS RENOVATIONS



**Specialists in high quality
residential renovations**

**1850 York Road
Timonium, Maryland 21093
Phone: 410.561.0221
www.adrbuilder.com • MHIC #8097**

Join Guilford on Facebook.

Guilford's Facebook Group is live!

If you'd like to join the Guilford residents-only Facebook group, please find it under "Guilford - Baltimore's Premier Residential Community." You will have to provide your name and street address and accept the group conduct standards to be admitted. Over 200 of your neighbors have joined since it went live one year ago!

The Guilford Association, Inc.

4200 Saint Paul Street

Suite 100

Baltimore, Maryland 21218

The Guilford News

SUMMER 2023



GREG PEASE PHOTOGRAPHY

Sherwood Gardens Live Music Series

Listen to these talented artists at our annual late summer/early fall music series — Every Sunday in September at 4:30pm.

September 3

Julie Riffle and Lauren Weiner

September 10

Roger Friskey

September 17

Pat O'Neill

September 24

Glenn Schwartz

Bring a blanket, picnic, drinks, family, and friends to enjoy a free afternoon of music in beautiful Sherwood Gardens. These events will be cancelled if there is rain.